



ANCASTER

FOOD EQUIPMENT

TRUE® REFURBISHED GLASS DOOR FLORAL REFRIGERATORS



| | <i>GDM-23</i> | <i>GDM-26</i> | <i>GDM-49</i> | <i>GDM-72</i> |
|------------------------------------|--|----------------------|-----------------------|----------------------|
| Doors | One Hinged | One Hinged | Two Hinged | Three Hinged |
| Shelves | 4 | 4 | 8 | 12 |
| Usable Cubic feet | 19.7 | 22.3 | 42.8 | 63.3 |
| Exterior Dimensions (WxDxH) | 27" x 29.9" x 78.6" | 30" x 29.9" x 78.6" | 54.1" x 29.9" x 78.6" | 78.1" x 29.9" x 79.4 |
| Usable Interior Dimensions (WxDxH) | 23.5" x 25.25" x 57" | 26.5" x 25.25" x 57" | 50.5" x 25.25" x 56" | 74.9" x 25.25" x 57 |
| Net Weight (lbs) | 355 lbs | 325 lbs | 470 lbs | 630 lbs |
| Shipping Dimensions (WxDxH) | 32" x 32" x 84" | 32" x 32" x 84" | 56" x 32" x 84" | 80" x 32" x 84" |
| Gross Weight (lbs) | 400 lbs | 400 lbs | 545 lbs | 700 lbs |
| Electrical | 115V/60Hz/1ph *requires OWN Dedicated Circuit (NO extension cords) | | | |
| Temperature | Cabinet holds 35°F (1.6°C). However, is able to be customized to accommodate your floral needs, advise required temperature. | | | |
| Plug Type | NEMA 5-15P | | | |
| Amps | 5.2 | 7.2 | 10.6 | 12 |
| Compressor HP | 1/3 | 1/3 | 1/2 | 1/2 |
| Refrigerant | R134a or R290 | | | |
| Warranty | Seven Year Warranty on the brand-new Compressor, Two Year Warranty on the Parts and Service. Extended warranty available for parts only. | | | |



CONTACT US FOR MORE DETAILS:

WWW.ANCASTERFOODEQUIPMENT.COM · TOLL FREE 1-855-888-9644 · SALES@ANCASTERFOODEQUIPMENT.COM



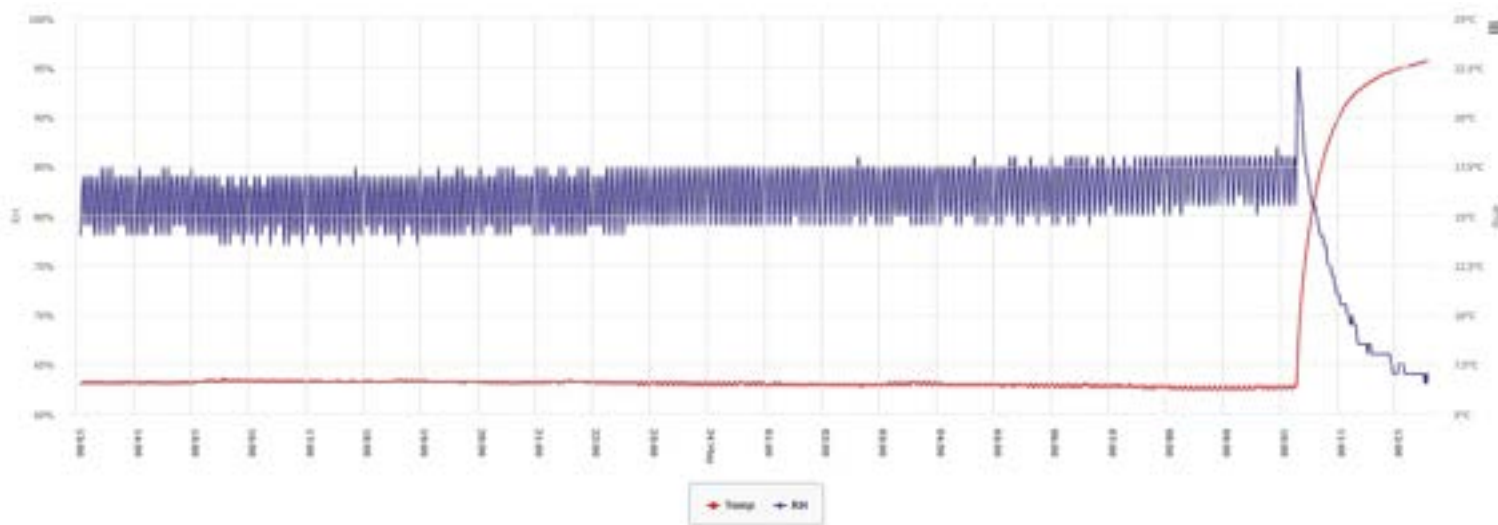
Ancaster Food Equipment
396 Henry Street
Brantford, ON, N3S 7W1
1-855-888-9644

Information about Relative Humidity (RH) in Remanufactured Floral Coolers

Our remanufactured floral coolers undergo the same cabinet modifications to match the True® self-contained floral cooler. As flowers require gentle airflow and high humidity to remain fresh, all our floral coolers are specially retrofit with electronic controllers and temperature probes to hold a tight temperature range suitable for your plants. If you have special requirements, let us know and our technicians will customize your cooler settings!

Humidity levels in beverage coolers is typically below 10% which is far too low for flowers. That's why we make the appropriate adjustments to reach 80% to 95% Relative Humidity (RH) levels in our floral cabinets. Similar to the True® floral cabinet, there is no humidity control. However, as the chart below demonstrates, the modifications that our technicians perform raise relative humidity to appropriate levels.

In the below graph, the blue line is RH % (left axis) while the red line shows temperature (right axis) over a 24-hour test period. The temperature range is tighter than the average cooler and RH is much higher reaching over 85%. If you have any further questions, please don't hesitate to reach out!



If you are interested in a temperature & humidity logger that can send phone/text alerts, you can find more info here - <https://www.ancasterfoodequipment.com/product/accessories/logger-flex-refrigerators-coolers/>