



**ANCASTER**  
FOOD EQUIPMENT

**MODEL GDM-26**

## REFURBISHED TRUE® GLASS DOOR MERCHANDISER

**CABINET DIMENSIONS (IN):**

W 30 x D 29<sup>7</sup>/<sub>8</sub> x H 78<sup>5</sup>/<sub>8</sub>

**CRATED WEIGHT: 325 LBS**

**SHELVES: 4 Adjustable**

**AMPS: 7.2 HP: 1/3**

**NEMA CONFIG. 5-15P**



**CORD LENGTH: 9FT**

**VOLTAGE: 115/60/1**

**TEMP RANGE: 33°F TO 35°F**  
or .5°C TO 1.5°C

**CERTIFICATION: NSF-7**

**ENERGY STAR RATED**



**CONTACT US FOR MORE DETAILS:**

TOLL FREE 1-855-888-9644

[WWW.ANCASTERFOODEQUIPMENT.COM](http://WWW.ANCASTERFOODEQUIPMENT.COM)

[SALES@ANCASTERFOODEQUIPMENT.COM](mailto:SALES@ANCASTERFOODEQUIPMENT.COM)



ON THE

**PARTS & SERVICE**

**FINANCING & LEASING OPTIONS AVAILABLE, ASK FOR DETAILS!**



ON THE

**COMPRESSOR**



**REFURBISHED TRUE® GLASS DOOR MERCHANDISER**



**NEW COMPRESSOR**



**NEW ACRYLIC  
SIGNAGE**



**NEW COSMETIC  
PAINT & VINYL**



**NEW SOLENOID  
VALVE &  
DRIER FILTER**



**VIRGIN FREON**



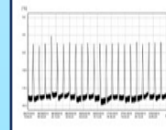
**NEW LED LIGHTS**



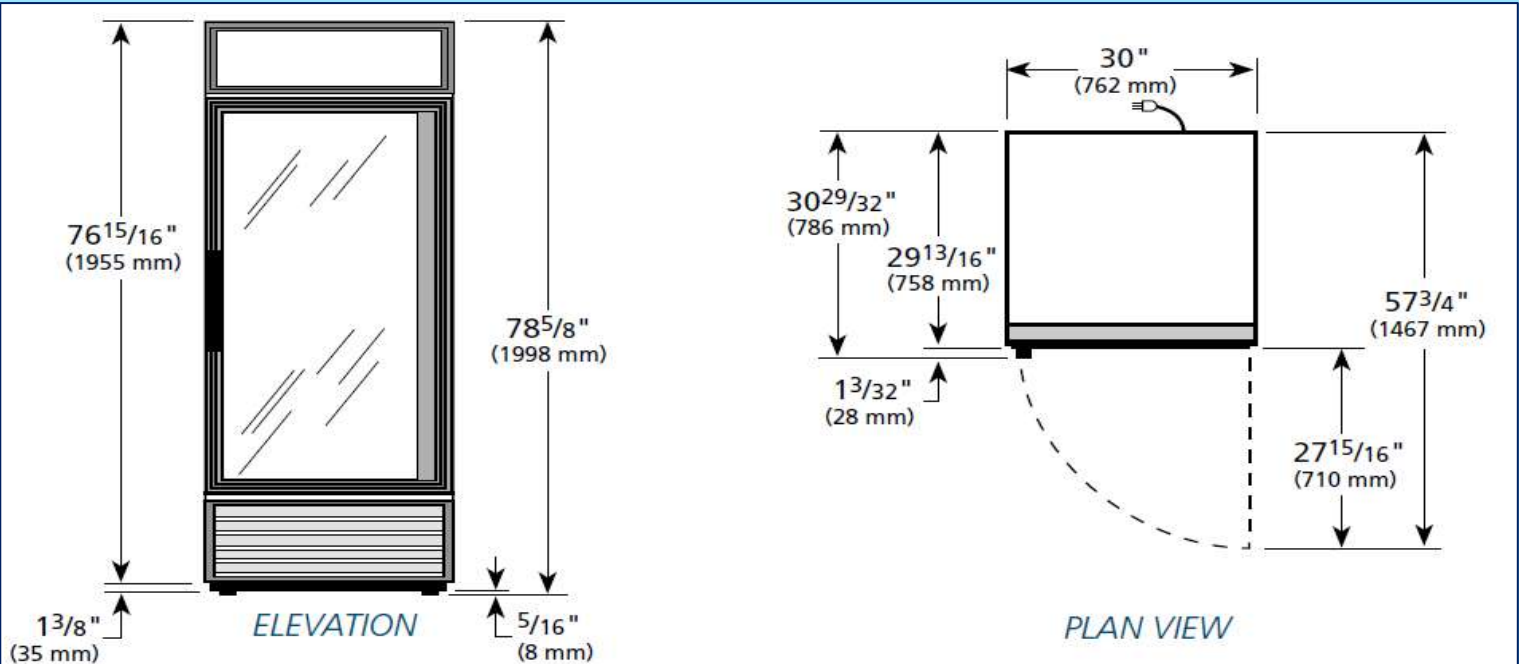
**NEW CONTROLLER**



**NEW TEMPERATURE  
PROBES**



**EXTENSIVE  
TESTING**



**CONTACT US FOR MORE DETAILS:**

TOLL FREE 1-855-888-9644

[WWW.ANCASTERFOODEQUIPMENT.COM](http://WWW.ANCASTERFOODEQUIPMENT.COM)

[SALES@ANCASTERFOODEQUIPMENT.COM](mailto:SALES@ANCASTERFOODEQUIPMENT.COM)

